

## Digital Cabinets Roll-Through Refrigerator 1600 lt - 1 Full, 1 Glass door

ITEM # \_\_\_\_\_

MODEL # \_\_\_\_\_

NAME # \_\_\_\_\_

SIS # \_\_\_\_\_

AIA # \_\_\_\_\_


**726498 (R116R2FGT)**

 Roll-Through Refrigerator  
 1600 lt - 1 full, 1 glass door-  
 230 V/1N/50Hz

### Short Form Specification

**Item No.** \_\_\_\_\_

External and internal in AISI 304 stainless steel. Body insulation thickness mm75. N. 1 full door and N. 1 glass door with heated frame. Built-in refrigeration unit; ventilated operating mode; digital control; automatic defrost; external digital temperature display. Operating temperature +2+10°C. For ambient temperatures up to 32 °C. CFC and HCFC free. R134a gas in refrigeration circuit. Gas in foam: Cyclopenthane.

### Main Features

- One full door and one glass door.
- The operating temperature can be adjusted from +2 to +10°C to suit both meat and dairy storage requirements.
- Performance guaranteed at ambient temperatures of +32°C.
- Simple control panel: on/off switch, high/low humidity switch and digital temperature display.
- Automatic defrost and automatic evaporation of defrost water.
- Ventilated cooling for optimal temperature distribution.
- Simple cooling unit easily accessible from the rear of the appliance.
- Universal shock-protectors on all sides.
- Complies with main international certification bodies and is CE marked.
- Plug-in installation: 1 phase, 220/240V supply.
- Connectivity ready for real time access to connected appliances from remote and data monitoring (requires optional accessory).

### Construction

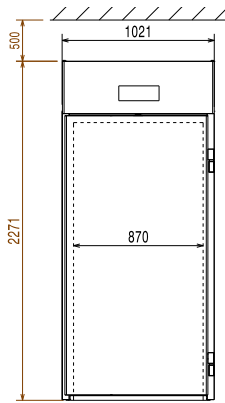
- Built-in compressor to suit operating conditions.
- Interior cell and external panel are constructed in 304 AISI stainless steel.
- 75 mm thick insulation, with cyclopentane injection for long-term insulation and energy saving.
- CFC and HCFC free (ecological refrigerant type: R134a, - gas in foam: cyclopentane).
- Refrigerant type: R134a.
- Developed and produced in ISO 9001 and ISO 14001 certified factory.
- Finished in top quality materials to ensure durability.

### Optional Accessories

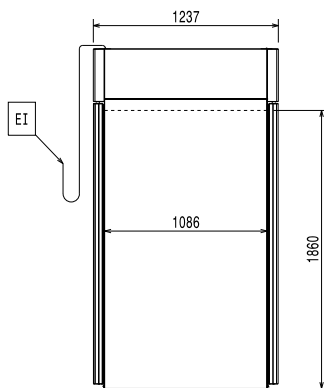
- Roll-in rack for 2/1 GN grids PNC 881449
- Trolley for 20x2/1GN roll-in rack PNC 922134
- Base for 20x2/1GN roll-in rack PNC 922142
- 60mm pitch roll-in rack for 20x2/1GN PNC 922204
- 80mm pitch roll-in rack for 20x2/1GN PNC 922206

**APPROVAL:** \_\_\_\_\_

Front

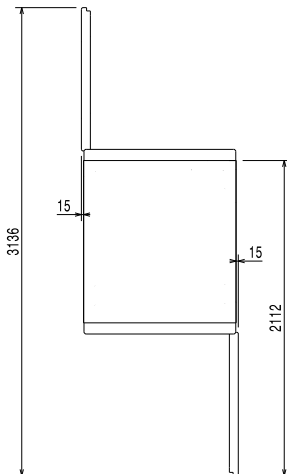


Side



EI = Electrical inlet (power)

Top



### Electric

**Supply voltage:**

726498 (R116R2FGT)

230 V/1 ph/50 Hz

### Key Information:

**Door hinges:**

Right Side

**Built-in Compressor and Refrigeration Unit**
**External dimensions, Width:** 1021 mm

**External dimensions, Height:** 2271 mm

**Number and type of doors:** 2 Full;Glass

**External side panels:** 304 AISI

**External top panels:** 304 AISI

**External door material:** Glass;Stainless Steel AISI

304 - Din 1.4301

**Internal panels material:** 304 AISI

### Refrigeration Data

**Compressor power:** 3/8 hp

**Refrigerant type:** R134a

**Refrigeration power:** 546 W

**Refrigerant weight:** 340 g

**Operating temperature min.:** 2 °C

**Operating temperature max.:** 10 °C